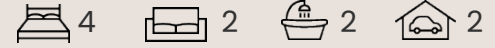


# Seacrest 25



**SOUTHERN  
VALE**

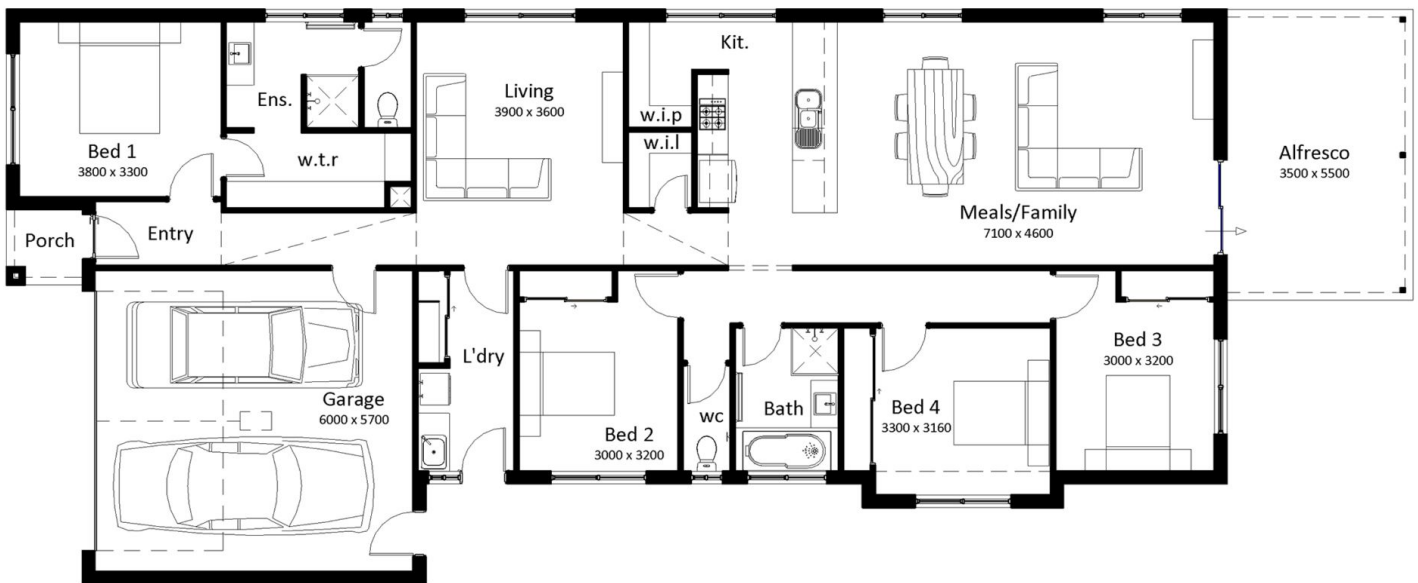


## HOUSE & LAND PACKAGE

ADDRESS Lot 217 Bramel Court Benalla,  
Livingston Estate  
Lot Size: 1008<sup>m</sup><sup>2</sup>

FROM \$682,000\*

*Inspire Inclusions*



- And much more
- Colorbond roofing
- Concrete driveway
- Down lights to main living
- Floor coverings
- Flyscreens to Windows and Sliding Doors
- Heating & Cooling
- Site cost allowance
- Westinghouse Appliances throughout

For Further Information contact our new home Consultants.

Sinead Simkin - 0418 597 329  
sales@southernvale.com.au

WWW.SOUTHERNVALE.COM.AU

SVA Pty Ltd T/as Southern Vale Homes | ABN: 89 150 500 557 All rights reserved  
Vic Licence: CDB-U 52000 (Domestic) CCB-L 76033 (Commercial) | NSW Licence: 259700C

\*Site costs are not fixed. Site costs are an allowance only and may increase depending on service connection costs, rock removal, retaining walls, tree root mitigation, developer requirements, BAL zoning and other statutory requirements. Price based on façade shown. Package not available with any other promotions. Additional options available, additional charges may apply. View the full list of Signature and Inspire inclusions [www.southernvale.com.au](http://www.southernvale.com.au). Prospective clients should seek independent legal and financial advice.

