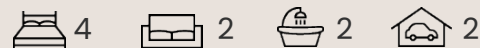


Pasco 23



**SOUTHERN
VALE**

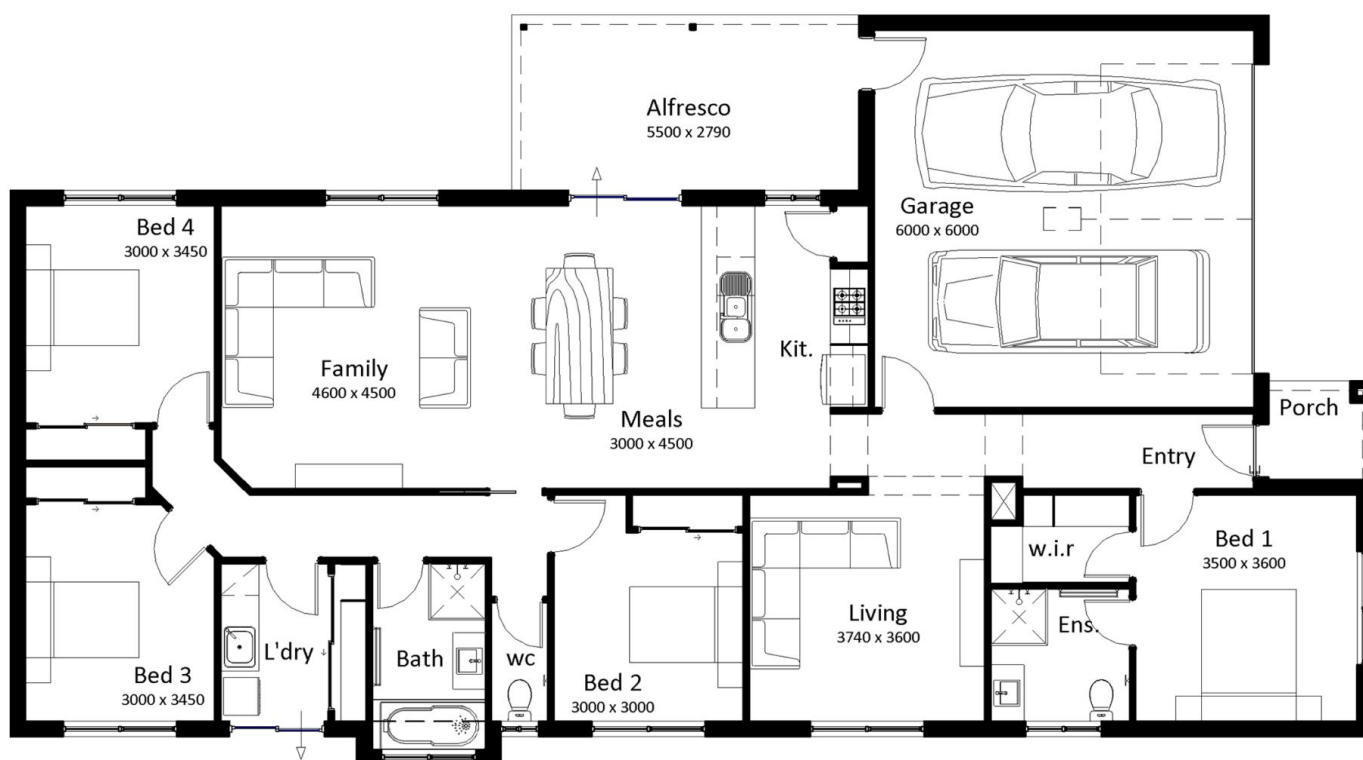


HOUSE & LAND PACKAGE

ADDRESS Lot 205 Bourke Drive Benalla ,
Livingston Estate
Lot Size: 869^m²

FROM \$626,000*

Inspire Inclusions



- And much more
- Bricks over Windows and Garage
- Colorbond roofing
- Concrete driveway
- Down lights to main living
- Ducted Heating and cooling
- Floor coverings
- Flyscreens to Windows and Sliding Doors
- Site cost allowance
- Westinghouse Appliances throughout

For Further Information contact our new home Consultants.

Sinead Simkin - 0418 597 329
sales@southernvale.com.au



*Site costs are not fixed. Site costs are an allowance only and may increase depending on service connection costs, rock removal, retaining walls, tree root mitigation, developer requirements, BAL zoning and other statutory requirements. Price based on façade shown. Package not available with any other promotions. Additional options available, additional charges may apply. View the full list of Signature and Inspire inclusions www.southernvale.com.au. Prospective clients should seek independent legal and financial advice.

WWW.SOUTHERNVALE.COM.AU

SVA Pty Ltd T/as Southern Vale Homes | ABN: 89 150 500 557 All rights reserved
Vic Licence: CDB-U 52000 (Domestic) CCB-L 76033 (Commercial) | NSW Licence: 259700C